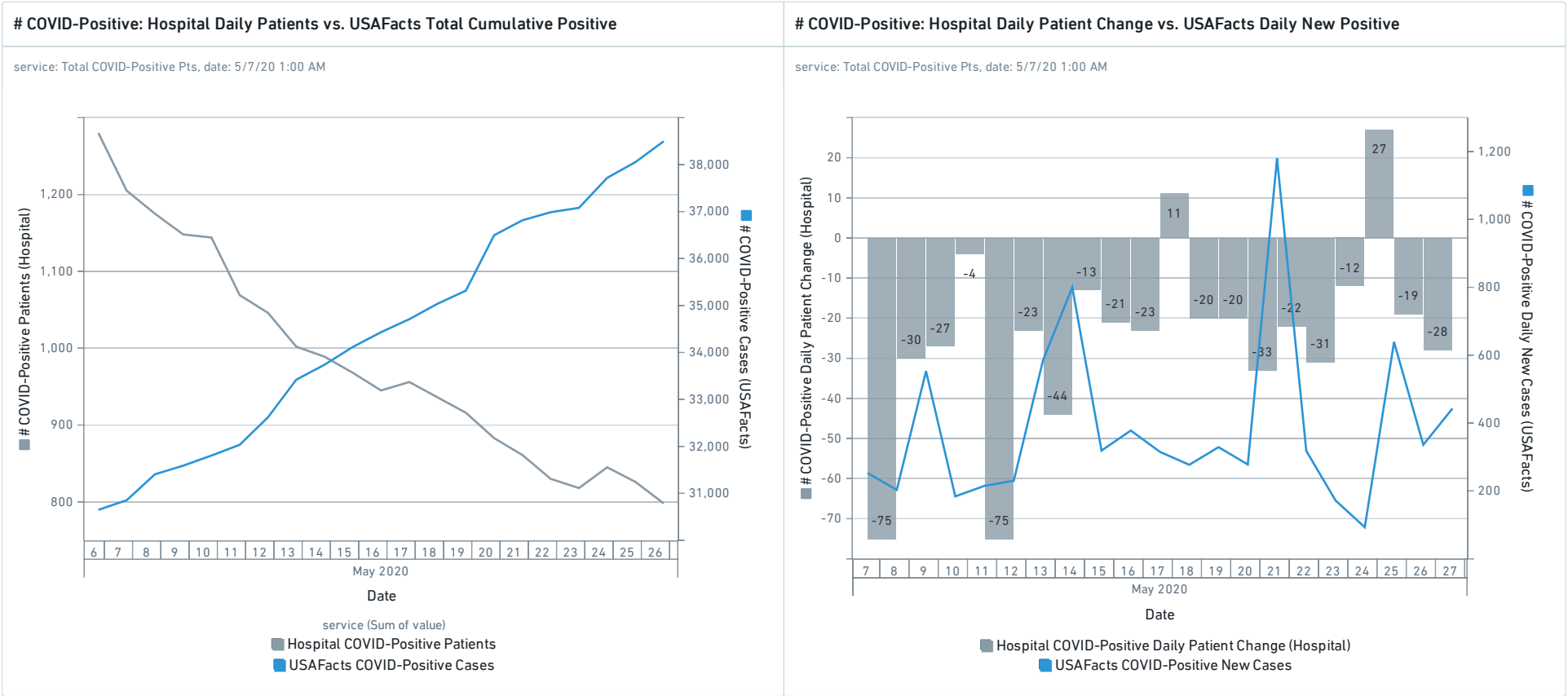


Tulane Case Review Report

I. Review of Total COVID-Positive: Comparing Hospital-reported patient figures against USAFacts total figures

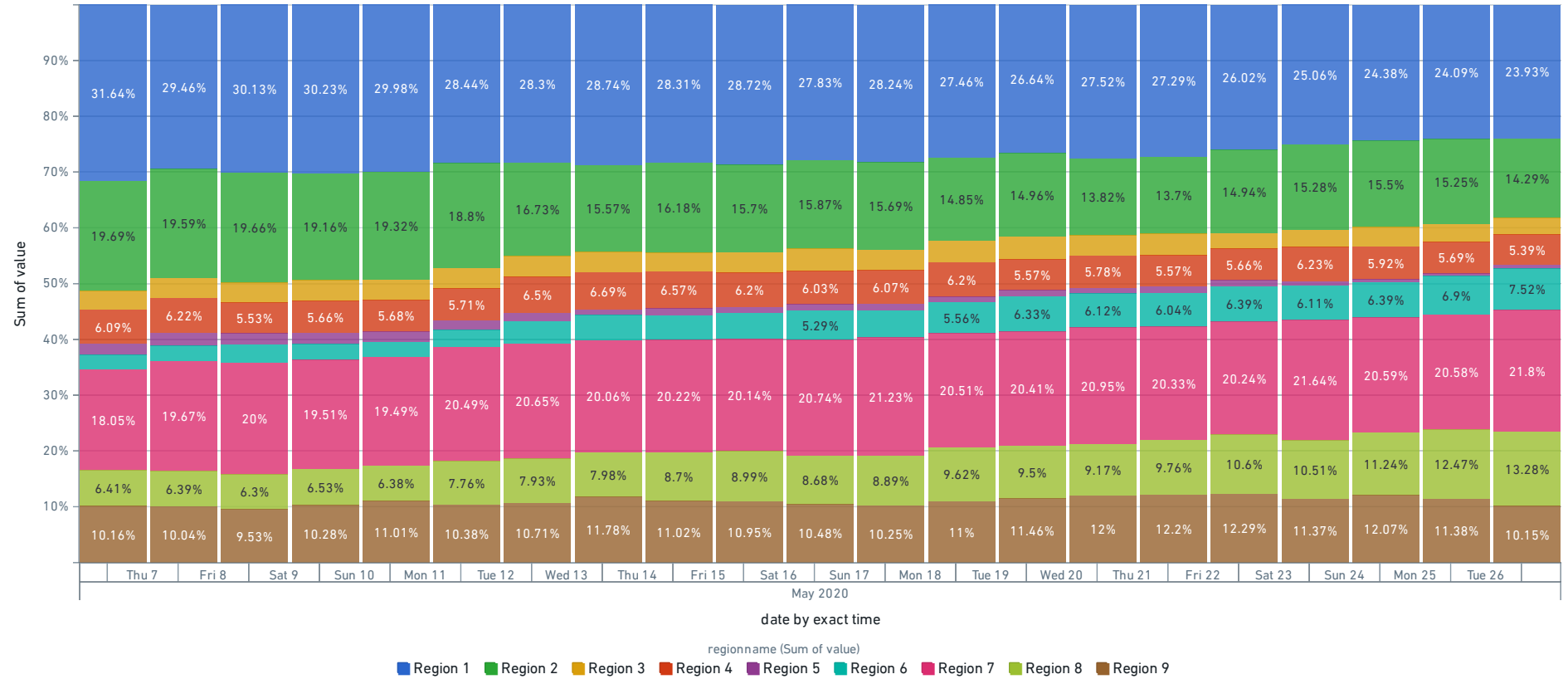


The above chart reviews in daily total volume of hospital COVID-POSITIVE patients against the broader publicly reported cases for the state. It's worth noting here that this is a comparison of ongoing hospitalizations against cumulative cases, not cumulative hospitalizations since that data is currently unavailable. Please note that there are two separate Y-axis.

Zooming in further, this chart looks at just the daily difference in COVID-POSITIVE patients in hospitals against the daily difference in total reported cases. Please note that there are two separate Y-axis.

COVID-Positive Hospitalizations by Region (%)

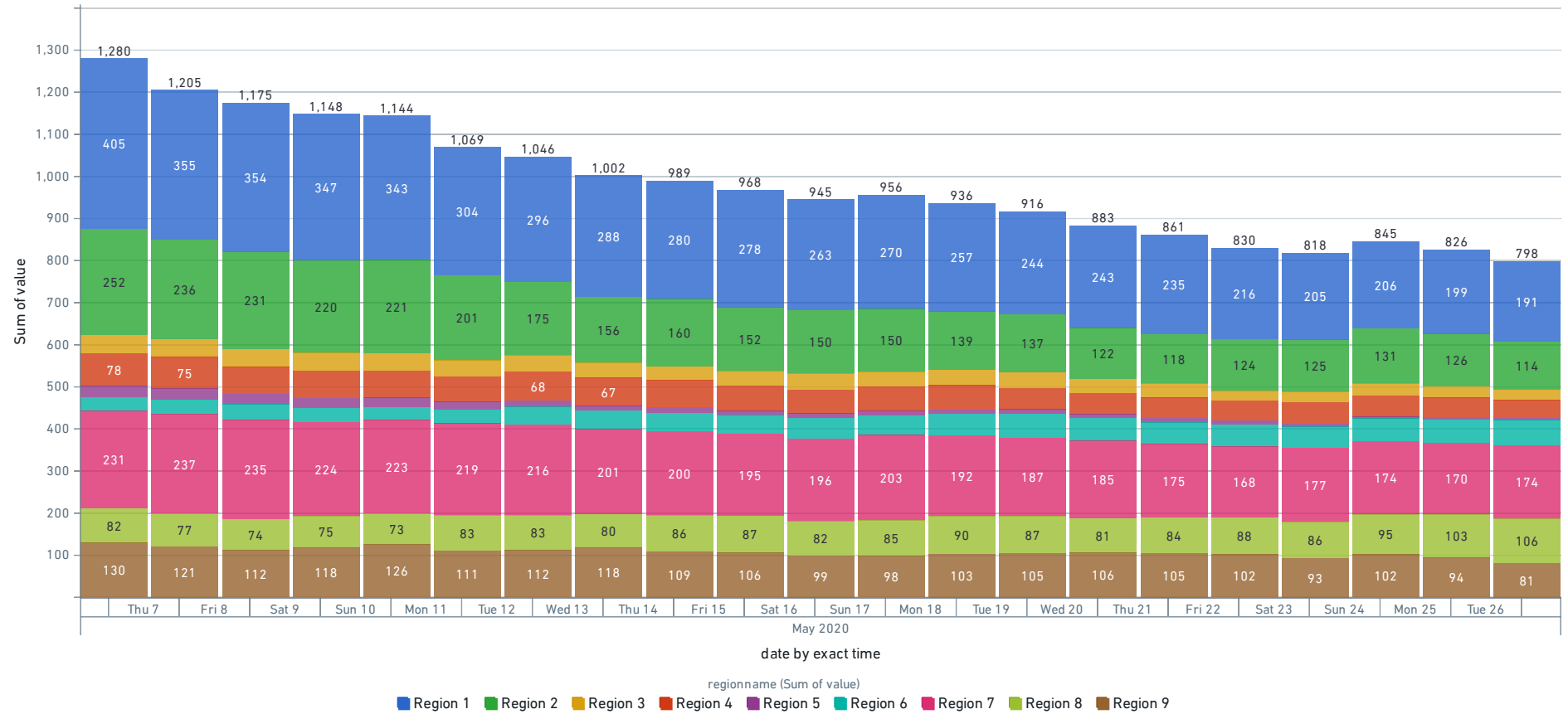
service: Total COVID-Positive Pts, date: 5/7/20 1:00 AM



Over time, the total % of all COVID-Positive hospitalizations shifted from primarily in Region 1, to just 30% in Region 1.

COVID-Positive Hospitalizations by Region (Absolute)

service: Total COVID-Positive Pts, date: 5/7/20 1:00 AM

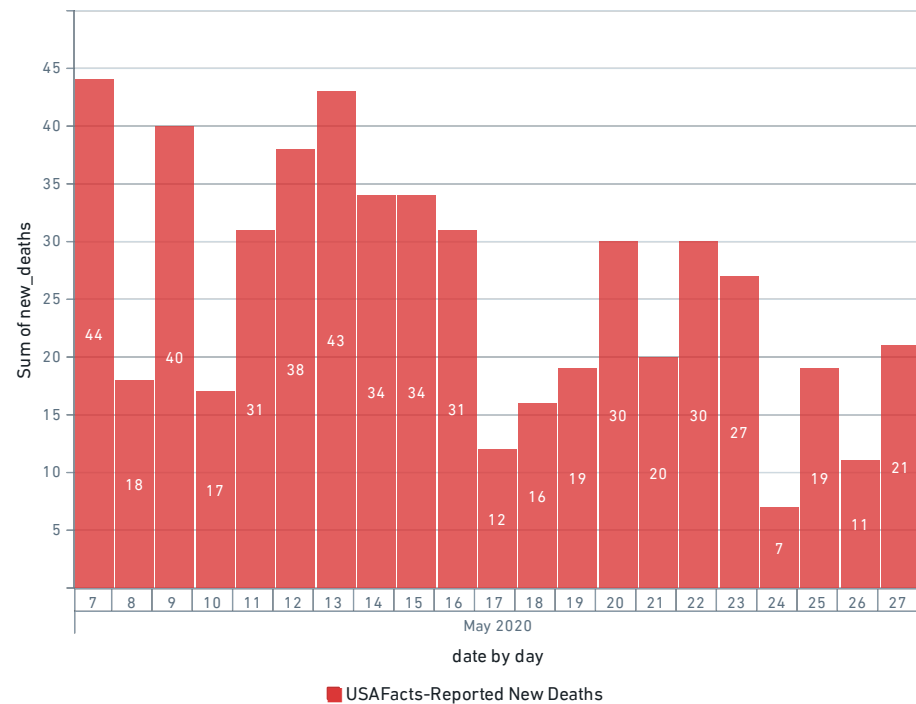


The above chart is the same underlying data for total COVID-Positive hospitalizations, but by absolute values.

II. Review of Total COVID Fatalities: Comparing Hospital-reported patient fatalities against USAFacts total fatalities

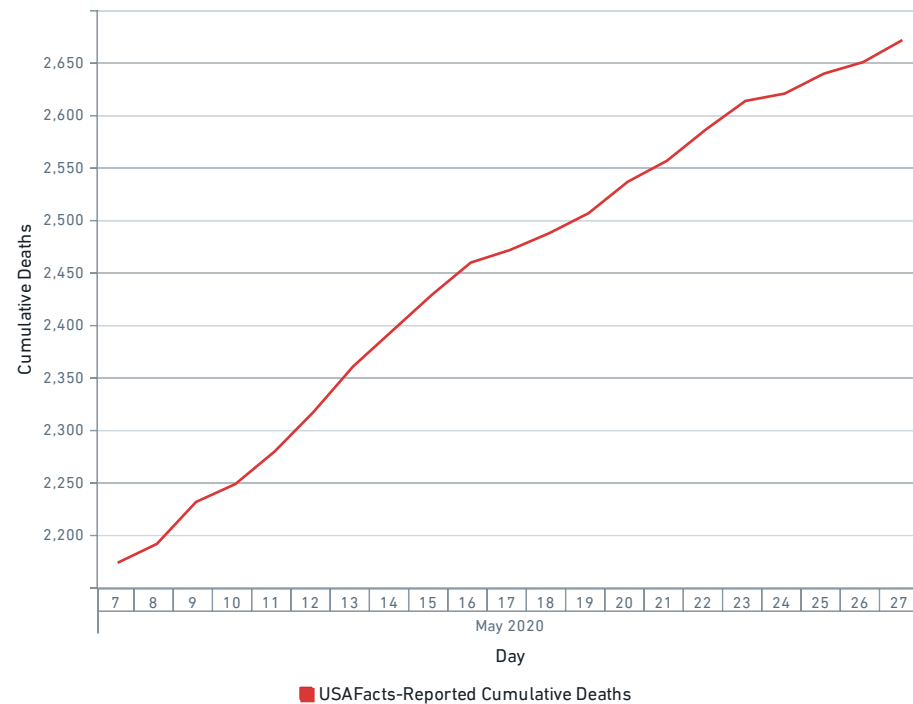
COVID-Related Daily Fatalities: USAFacts

date: 5/7/20 1:00 AM



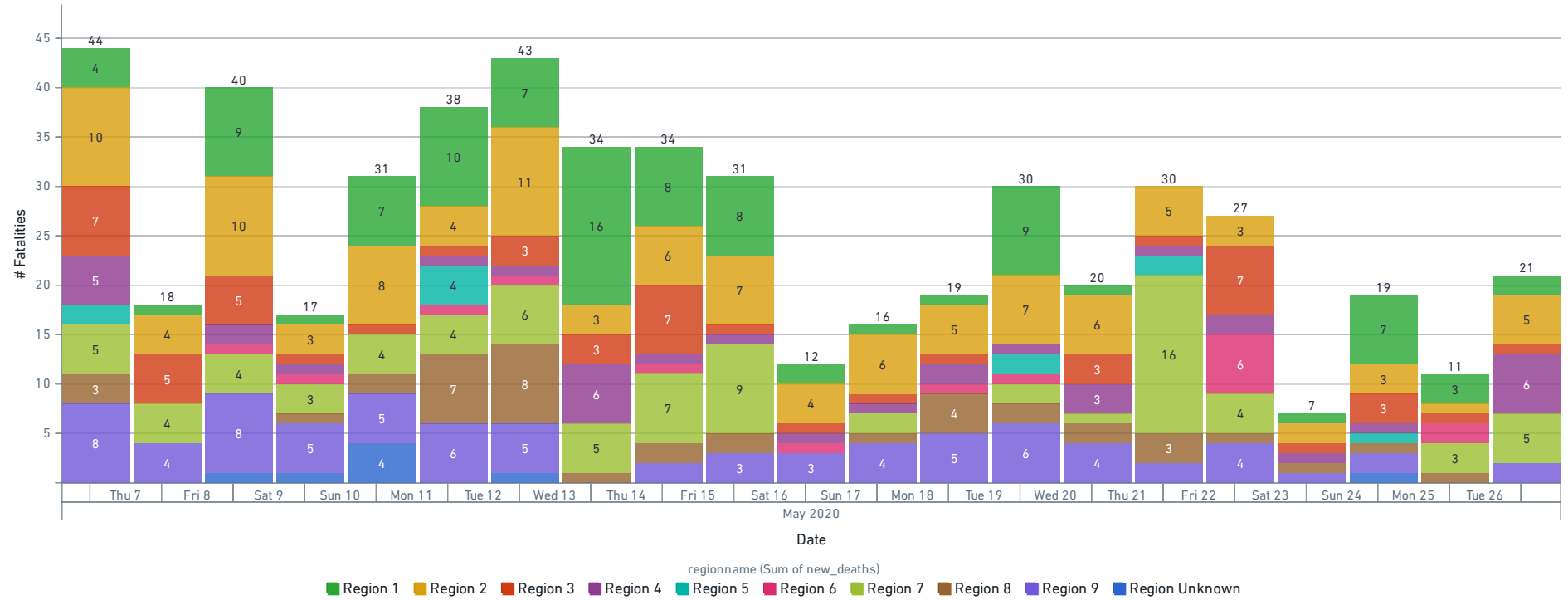
COVID-Related Cumulative Fatalities: USAFacts

date: 5/7/20 1:00 AM



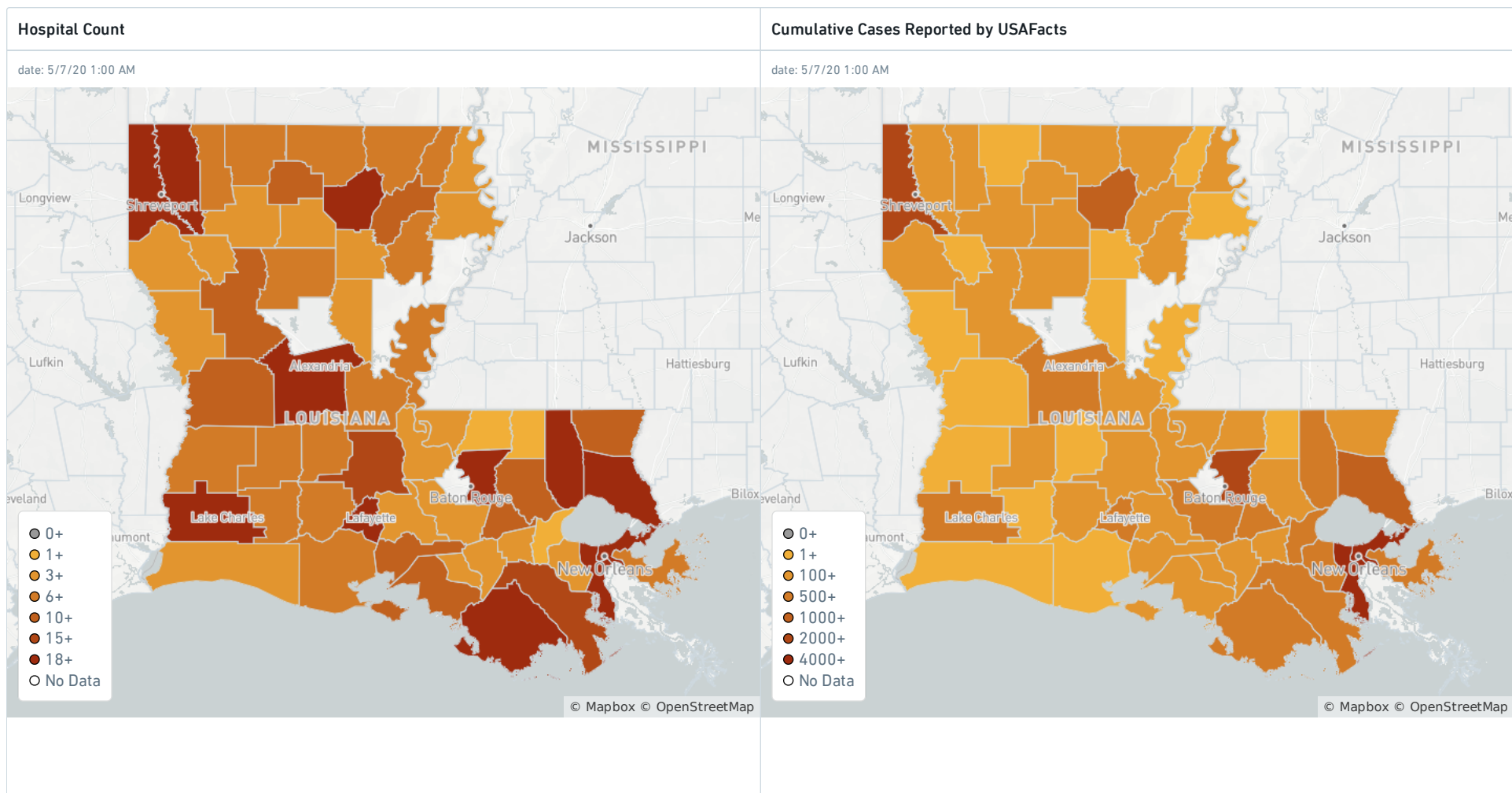
USAFacts-Reported COVID Fatalities by Region

date: 5/7/20 1:00 AM



The above chart shows the count of deaths as provided by USAFacts broken down by region.

III. Map Deep-Dive of Total COVID-Positive Impact across Louisiana

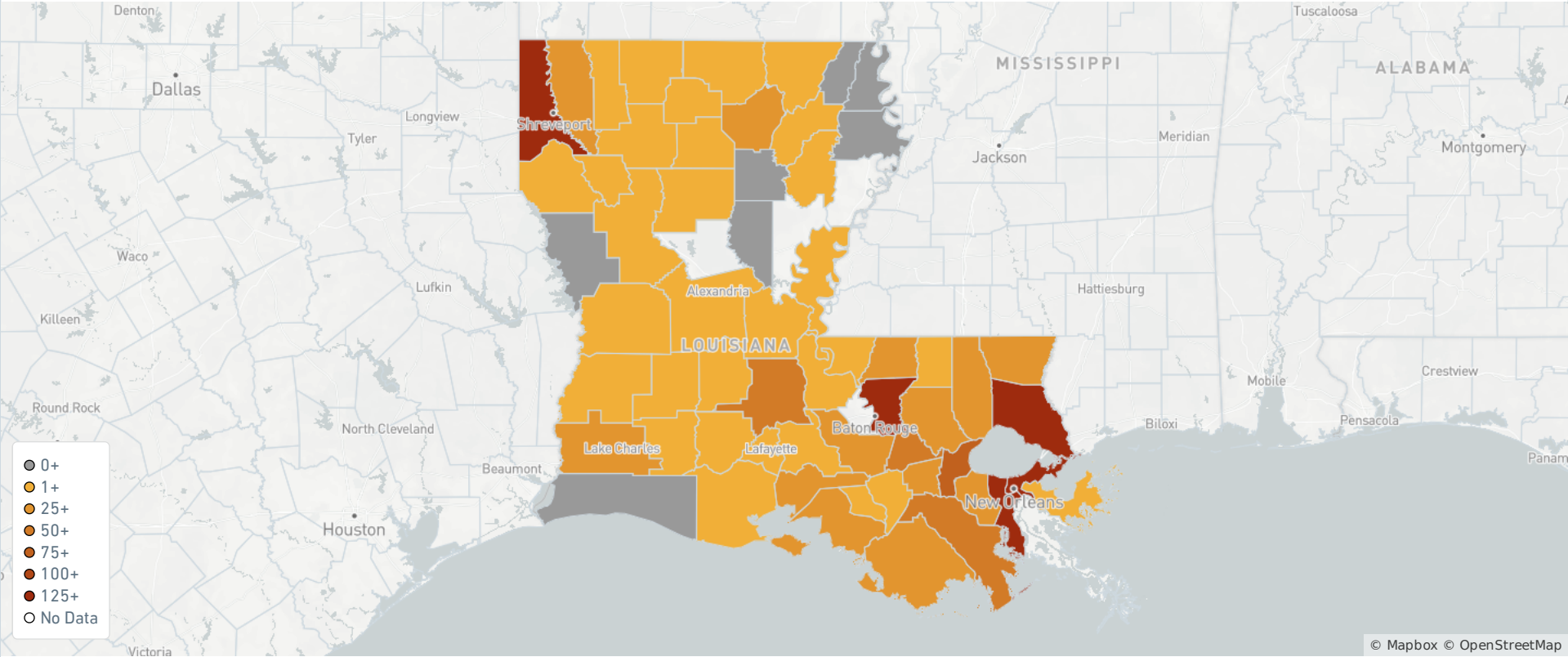


The above shows the number of hospitals in each region, comparing to the chart on the right which shows # of cases.

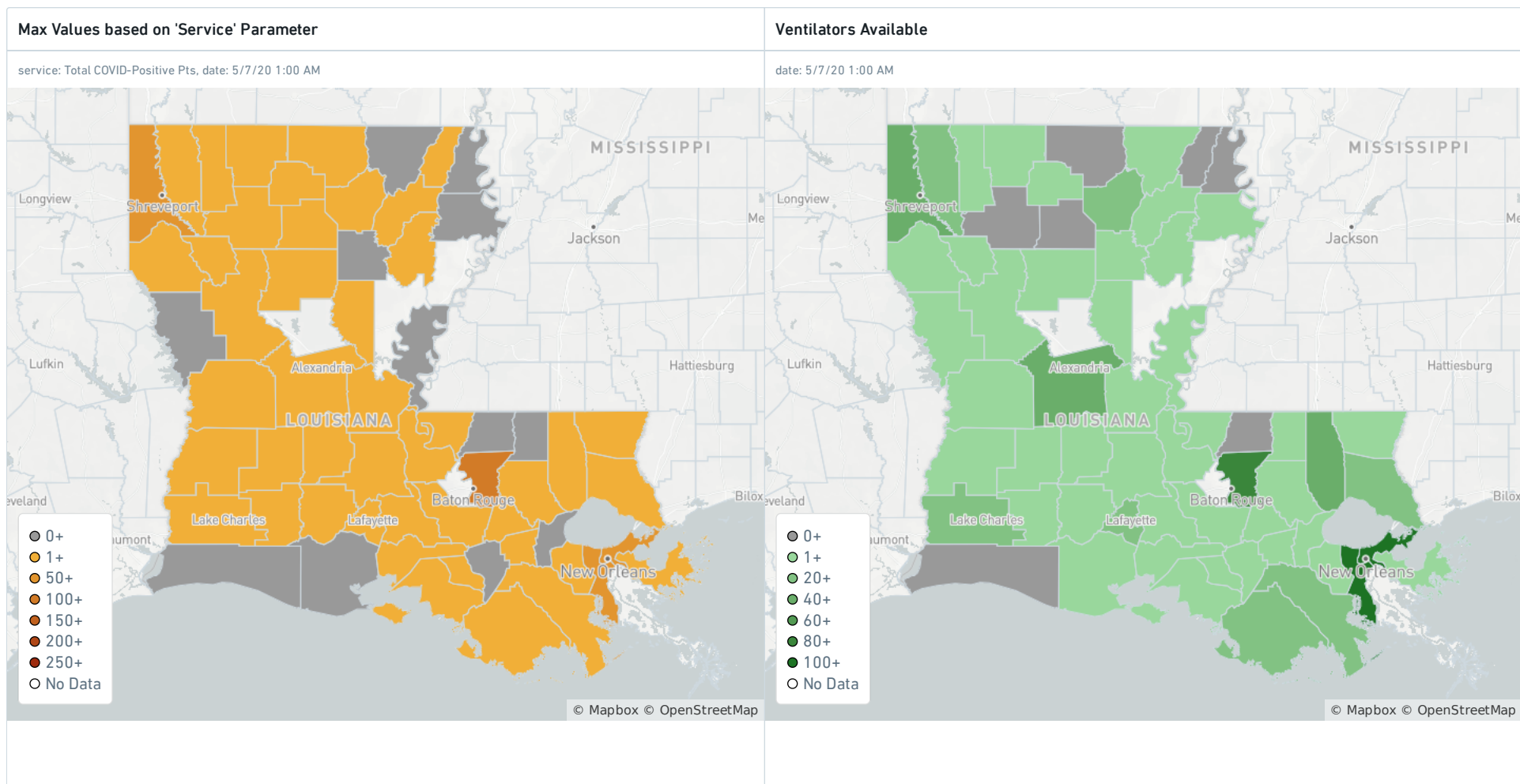
The above chart of total confirmed cases per county reflects the areas where there are cases but no hospitals (e.g. Grant Parish).

Cumulative Fatalities Reported by USAFacts

date: 5/7/20 1:00 AM



The above chart reflects total fatalities by parish, as reported by USAFacts.



The above chart does where all the COVID-Positive patients are hospitalized, which shows areas as compared to earlier where there are cases generally.

The above chart shows in green the areas with the highest number of available ventilators, which may help in guiding the re-allocation of patients to areas where there is outstanding capacity supply.